



漂流出口
OUTLET DRIFT

出口
DRIFT

Experimental

The unexpected, unprecedented combination of the music elements including instrumentation, music form & structure, vocal sound.

Outside the Box

The drastically-changing tempo, the unpredictable chords and tonality, the bewildering melody, the rising ululations, feel the most primitive pulse and the wildest beat of the band.

Indigenous Music

From language, melody, ballads, lyrics, staging, music topics, ALL reflected in the band's indigenous identity which they all proud of.

Narrative

Experiencing all emotions in one single song, narrating the stories of the indigenous community and the soliloquy of the band's mindset.

Rock

The music brings you the authentic grunge rock. Feel the 'Dirty' timbre that blows your mind!

**H
I
O
B
A**

Meet the members

Wushang Pihay
(guitar/ jawharp/
synthesizer/
percussion/ vocals)



Putad Pihay
(bass/ kabosi/
tapelik/ djembe/
vocals)



Lin Ken
(drums/
percussion/
vocals)



**T
U
O
B
A**



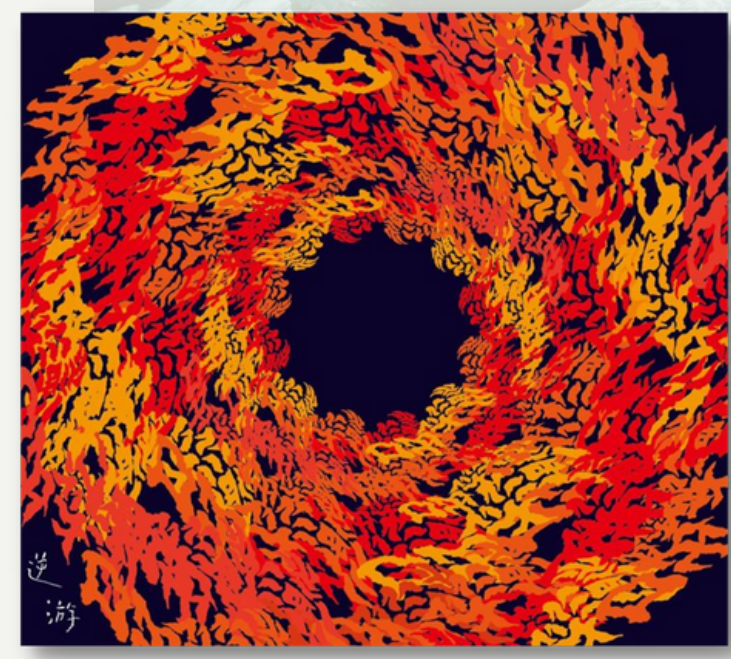
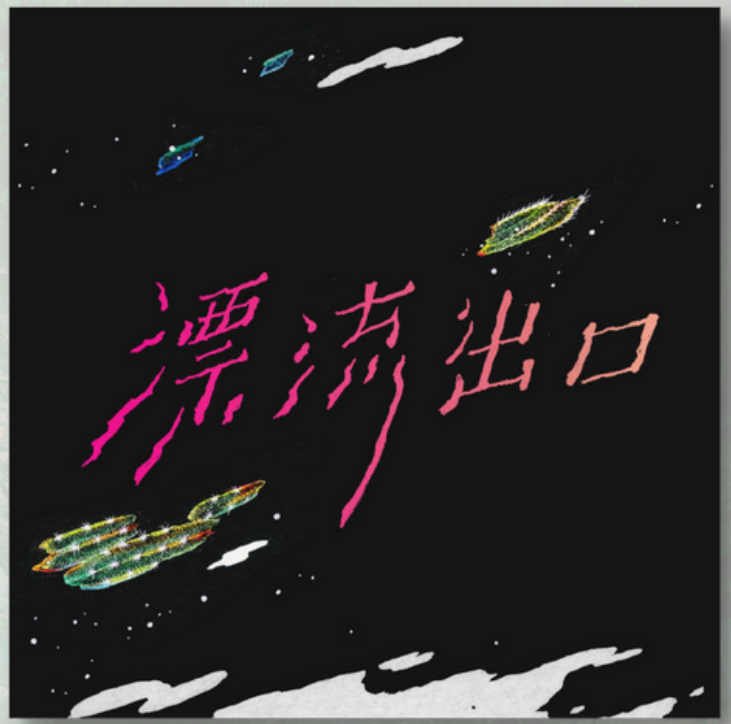
Lady Of The Ocean:
32th (2021) Golden Melody Awards
Best Indigenous Album (Won)

Best band, Best Indigenous Album, Best Album of the year (Nominated)

Largest Era:

9th (2018) Golden Indie Music Awards Best Rock Song (Won)

12th Freshmusic Awards Best Ep (Nominated)



Drowning:

6th (2015) Golden Indie Music Awards Best Rock Album (Nominated)

S
D
R
A
W
A

Putad Pihay

covered by Songlines Magazine (UK): #186 April, 2023



MEDIA COVERAGE

BAND & CREW

Wushang Pihay

guitar/ jawharp/ synthesizer/ percussion/ vocals

Putad Pihay

bass/ kabosi/ tapelik/ djembe/ vocals

Lin Ken

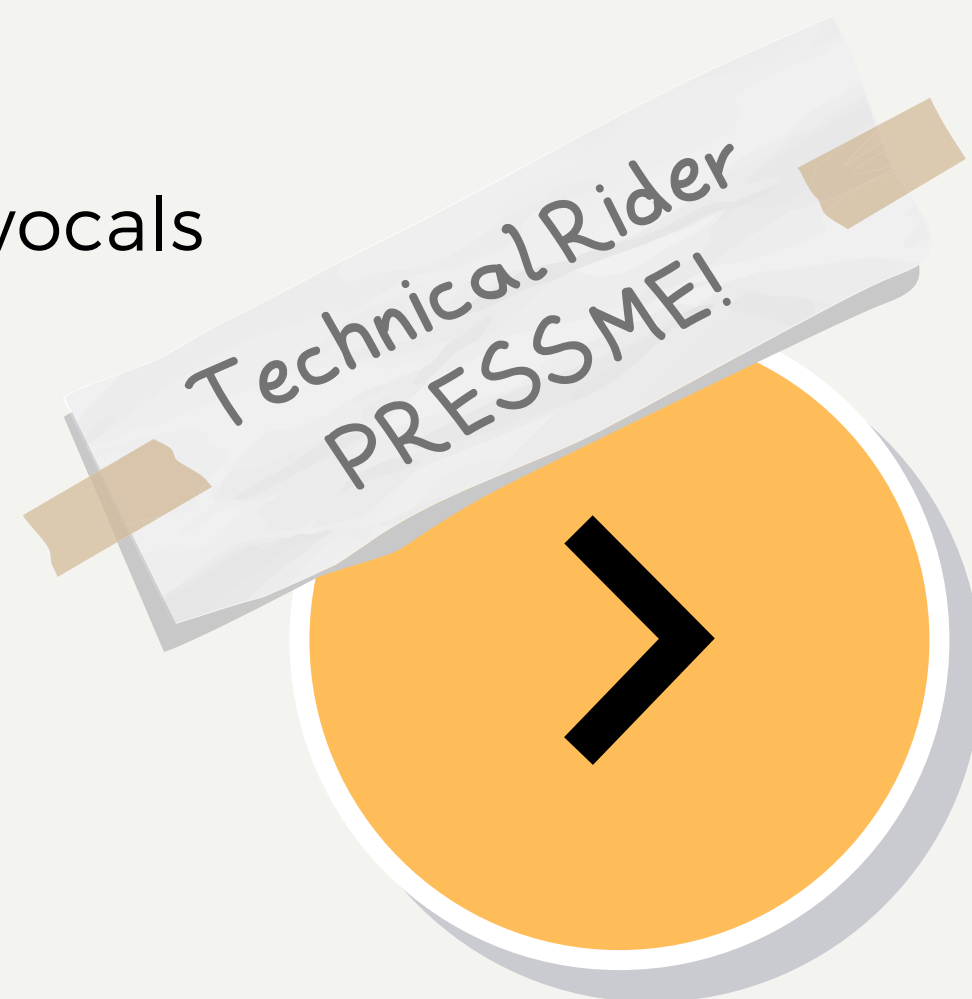
drums/ percussion/ vocals

Kui Tarazaljum

FOH engineer

Kanji Kawabata

technician/ roadies



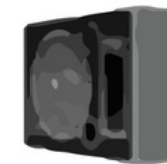
STAGE PLOT



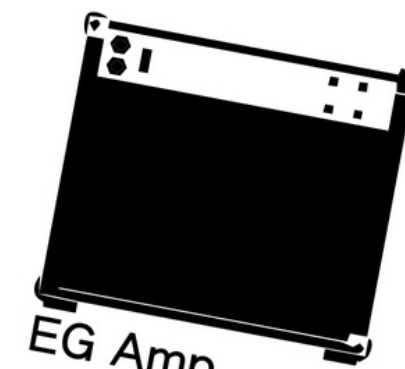
Bass Amp



Drum / Vocal : LIN KEN

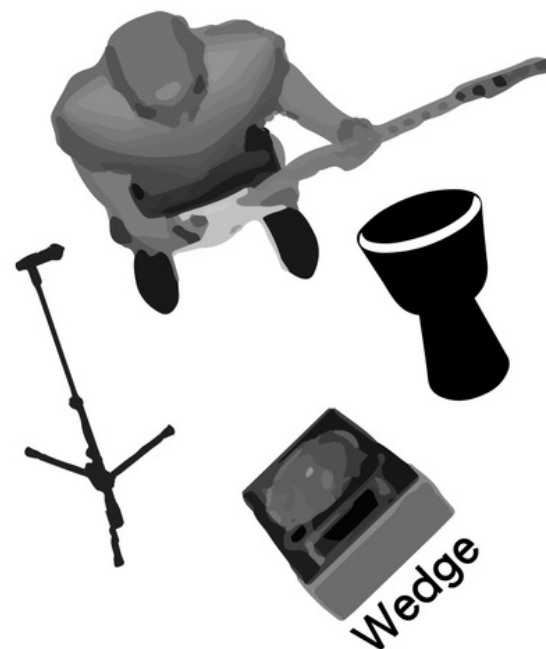


Wedge



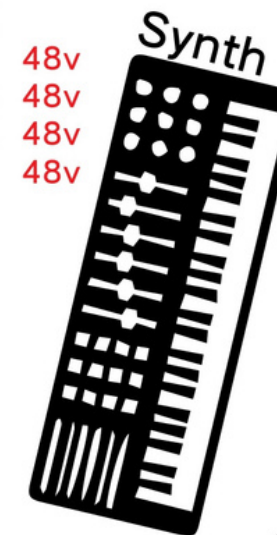
EG Amp

CH 1	Kick In	SHURE BEAT 91	48v
CH 2	Kick Out	SHURE BEAT 52A	
CH 3	Snare-Top	SHURE SM 57	
CH 4	Snare-Bot	SHURE SM 57	
CH 5	Tom 2	Sennheiser E 904	
CH 6	Floor Tom	Sennheiser E 904	
CH 7	Hi-Hat	AKG C451B	48v
CH 8	OH-L-FL	Sennheiser E 914	48v
CH 9	OH-R-SN	Sennheiser E 914	48v
CH 10	Ride	AKG C451B	48v
CH 11	Vocal1	SHURE SM 58s	



Bass / Djembe / Lead Vocal : Putad

CH 12	Bass1	Radial Pro DI
CH 14	Djembe	SM 57
CH 16	Vocal-2	SM 58s



Synth



EGT / Synth / Lead Vocal : Wushang

CH 13	E.GT	SM 57
CH 15	Synth	Radial Pro DI
CH 17	Vocal-3	SM 58s

Audience

REACH US

FIND US ON



CONTACT

info@windmusic.com.tw